



ENMA
CONVEYOR

ENMA reserves the right of final instruction and modification for all the content. All the products pictures, appearance, technical parameters and function description shall refer to the physical objects. If there is any configuration and parameter adjustment due to technical updates, you will not be notified additionally.

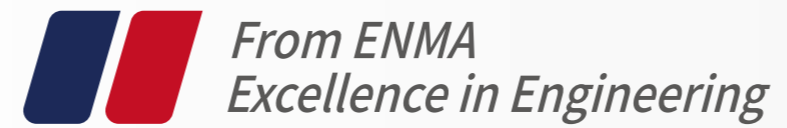
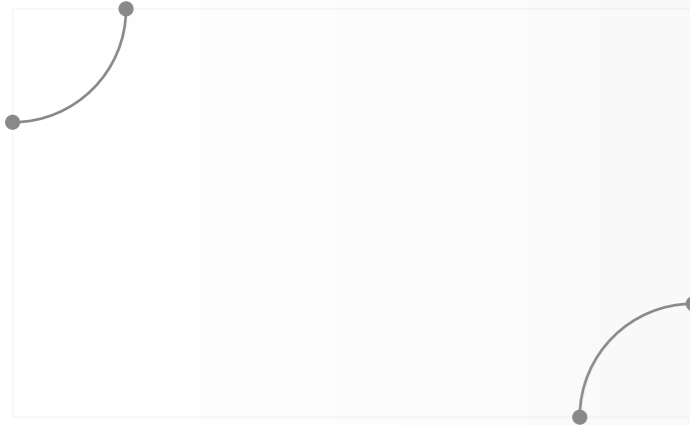


ENMA
CONVEYOR



TRANSMIT VALUE

ENMA Granulator(China)Co.,Ltd.
No.121.5888#,Baoqian Road,
Jiading District,Shanghai,China.
Tel:+86 21 69932999
Fax:+86 21 59589222
Email:info@enma.fr
Web:www.enma.fr



NO COMPROMISE FOR EXCELLENCE IN ENGINEERING

We aim at making your crushing recycling very different way through our experience of designing, and manufacturing the most advanced plastic crushing recycling solutions, which is a consistent philosophy of ENMA since its establishment in 1990. We are trying to achieve designs that used to be seen as unattainable.

However research is not the all. What is important is that we always pursue excellence and never compromise. In terms of business attitude, we focus on customers and employees and push us annually continuously, whatever we think "Good Enough" is only the purpose of the first step. We will always adhere to the pursuit of more advanced solutions and products.

"Beyond your expectations" is our commitment to our customers, employees, shareholders and society, so we never stop, because this promise is embedded in our blood and makes us never stopping.



EnMa CB400 500 600 800 1000 1200 Series Modular Intelligent Belt Transport Solution

EnMa CB Series belt conveyor comes in many different sizes to meet your process requirements. Standard belt width ranges from 400mm-1500mm. The belt conveyor adopts modular design, which makes installation and maintenance more convenient. With reducer driven, rotating belt conveyor through friction and it is the reliable choice of long distance materials transporting. Belt conveyor is also with two different belt options: light and heavy type. Light type is usually PVC belt and heavy type is equipped with rubber belt.

It also could be equipped with magnetic roller and frame type metal detector. The magnetic roller is for separating the metals, and the metal detector can detect the non-ferrous metal in the materials.

EnMa CB Series Industrial Transport Application

EnMa CB series is capable of carrying heavy loads in fast way and has a powerful three-dimensional modular structure that is suitable for all transportation applications such as plastic recycling, construction, ports, timber industry, mining and extractive industries, materials, coal, ore, etc.

Horizontal Belt Conveyor

EnMa CB400H 500H 600H 800H 1000H 1200H



Inclined Belt Conveyor

EnMa CB400I 500I 600I 800I 1000I 1200I



Low-bend Belt Conveyor

EnMa CB400L 500L 600L



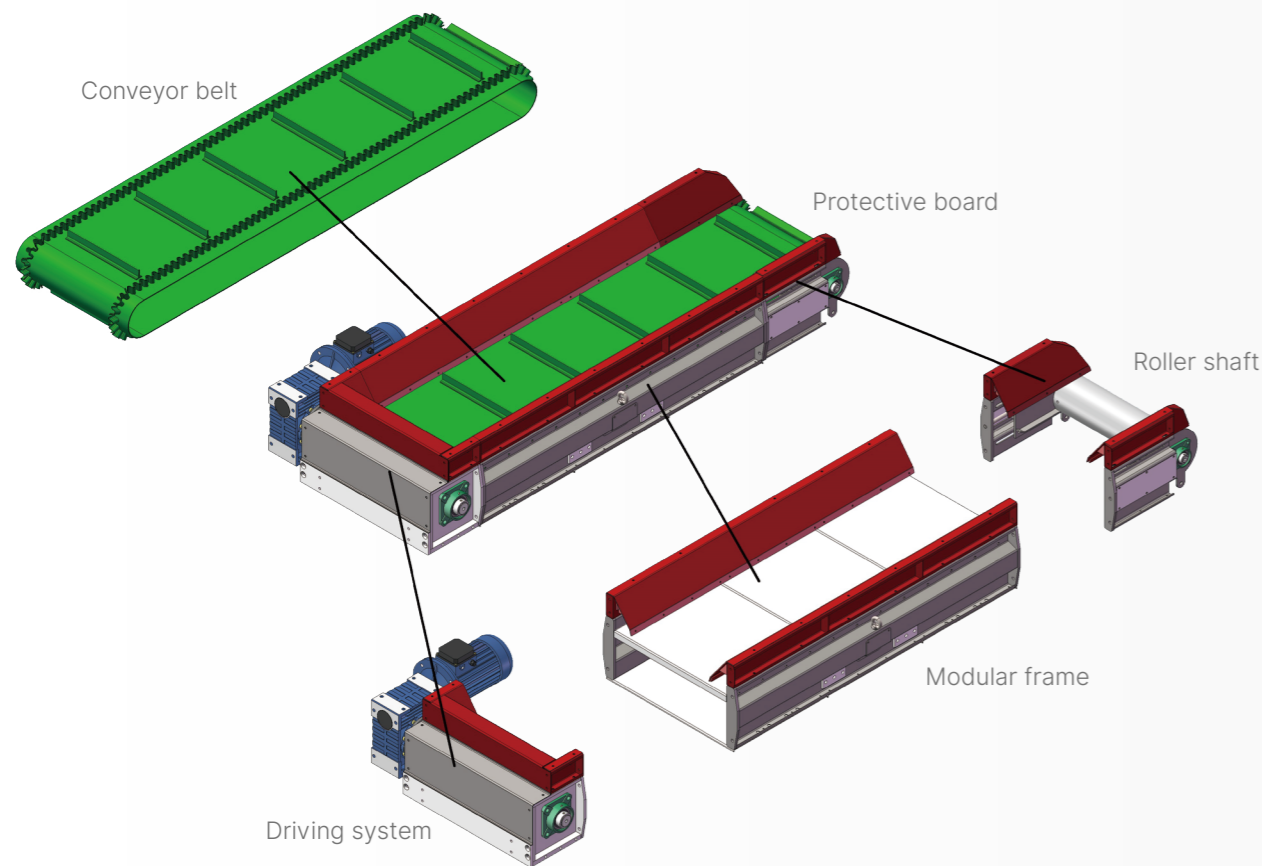
Up-bend Belt Conveyor

EnMa CB400U 500U 600U 800U 1000U 1200U

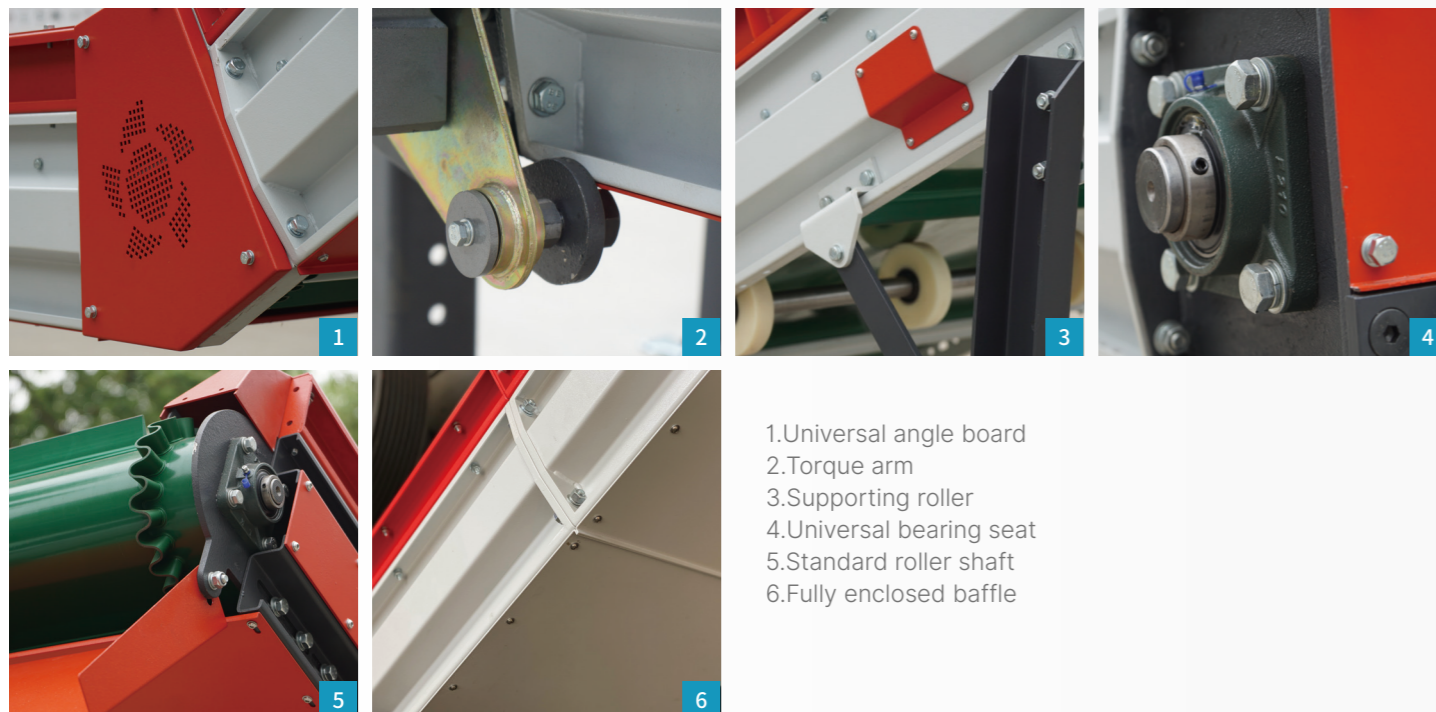


Dual-bend Belt Conveyor

EnMa CB400D 500D 600D



1. Recycling within plant
 2. Pipe Recycling and Outputting
 3. Inputting & Outputting
 4. Conveyor for electronic wire recycling
 5. Shredder inputting & outputting
 6. Belt type metal separator
 7. Feeding conveyor & metal detector
 8. Shredder outputting conveyor



1. Universal angle board
 2. Torque arm
 3. Supporting roller
 4. Universal bearing seat
 5. Standard roller shaft
 6. Fully enclosed baffle

TECHNOLOGY DATA

Belt width (mm) : 400 500 600 800 1000 1200
 Starting height (mm): 500
 Speed: 0.1m/s ~ 0.6m/s
 Module type side plate length(mm): 500/1000/1500

Length (mm) : 1500-7000
 Ending height (mm): 400-7000
 Tensioning: screw tensioning

Belt:

The standard is green PVC conveyor belt with plastic surface made of polyvinyl chloride (Polyvinylchloride, PVC). EnMa CB series standard PVC conveyor belt is suitable for at a normal temperature (-10°C to +80°C). According to the requirement of customers who can choose belts including belt trimming or not, anti-slip baffle, anti-slip belt. EnMa CB series is equipped with four cloth glue, which are with the features such as good elasticity, non-easy deformation, wear-resistant, resistant to hit and low noise etc.

Driver:

The standard driver is reducer and motor starting jointly, which is installed in the lower right corner of the conveyor.

Motor:

EnMa CB series is equipped with motor ranging from 0.55 to 5.5kw or inverter motor, which can be selected from 200-460V/ 50-60Hz depending on the country of use.

Supporter:

Standard supporter adopts carbon steel as standard, which is with adjustable design and manufacturing.

Surface treatment:

Standard of OSHA safe powder stoving varnish standard colors: dark gray RAL9011, gray RAL7035, ENMA red RAL3000.



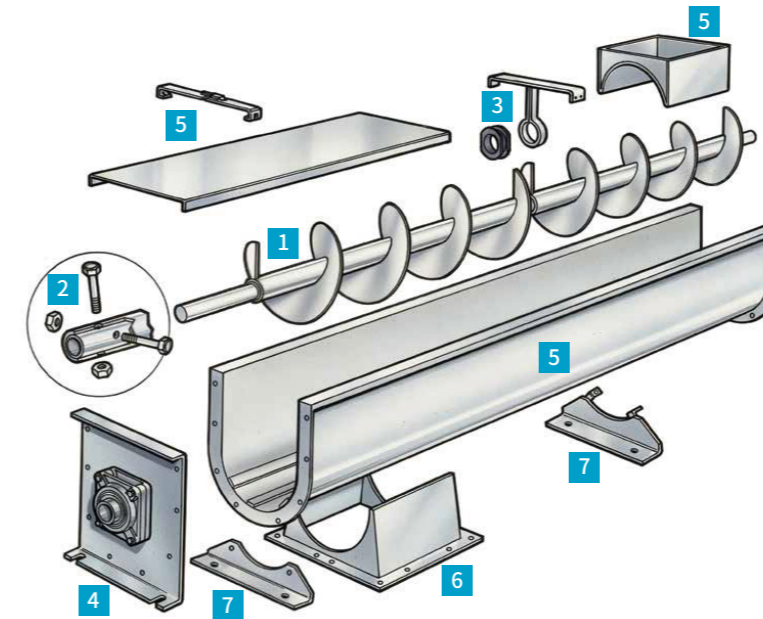
EnMa CS200 300 400 Series High Efficiency Spiral Conveyor

General Application:

EnMa CS series inclined screw conveyors are with two types of slots: U groove and tubular housing. U-shaped slots are designed to be simple, economical, and provide access for maintenance. U-shaped slots are used in most horizontal screw conveyor applications and tilting applications up to 20 degrees. As the inclination increases, the U-groove is very inefficient because the bulk material will fall back over the top of the screw threads in the open area of the U-groove. The tubular housing is used in most inclined spiral conveyor applications above 20 degrees. Transport efficiency is greatly improved by housing bulk materials in tubular shells and reducing fallback.

Design Features:

ENMA CS series spiral conveyor is the most reliable for transporting bulk materials with low cost and high benefit. Screw conveyor can transport a variety of bulk materials, such as plastic particles, powders, chemicals, sand, stones and so on. ENMA CS series spiral conveyor is designed to be used in almost any location, e.g. horizontal, vertical, inclined, different angles and heights areas. Our modular design allows you to complete your transport requirements.



1. Conveying screw:

Compact structure, screw surface, cross section, special design can meet your requirements.

2. Connector:

Easy maintenance, simple installation, high progress.

3. Hanger and bearing bracket:

Various styles and bearing materials can be selected to meet your needs.

4. Bearing cover plate:

A variety of bearing and sealing types can meet your needs.

5. U-groove, cover, clamp and frame:

Rugged standard "U" grooves and other types of grooves, including tubular grooves. Suitable for all applications.

6. Exhaust port:

All types of screw conveyors can be selected from natural, hydraulic or pneumatic doors.

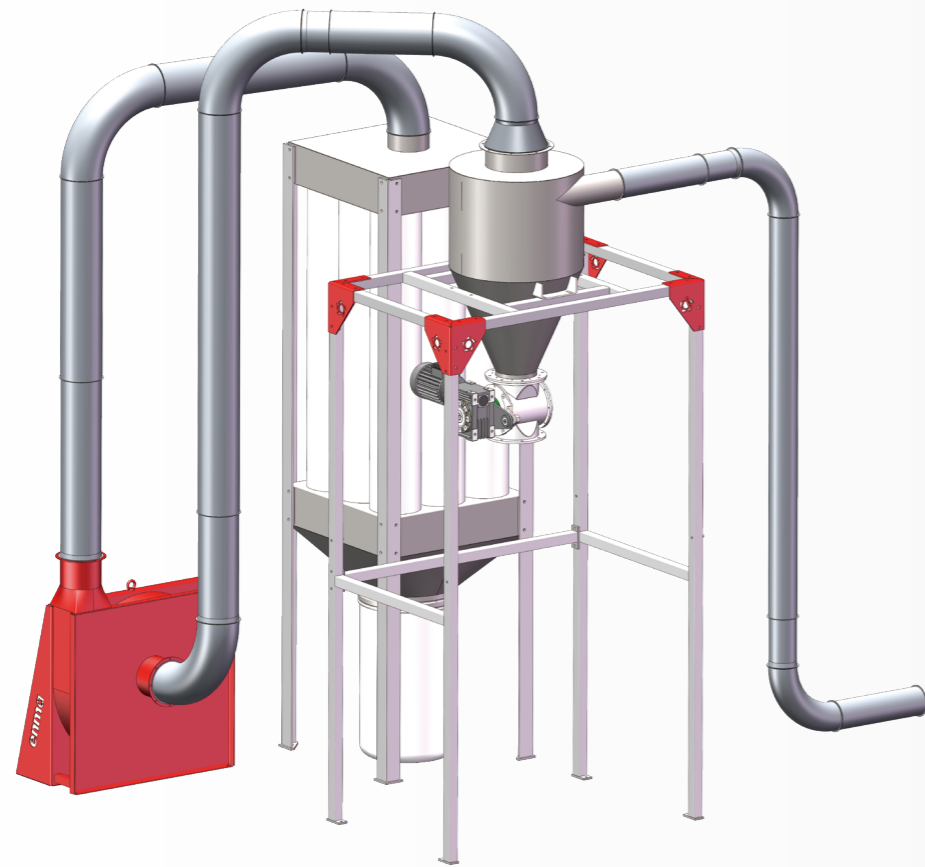
7. Supporting feet and jackstay:

Align and secure slots to ground or existing structure.



EnMa CS200 300 400 Series Spiral Conveyor Technology Data

EnMa CS Series-According to the customer's requests, we can provide you reliable selection through our strong inventory system.	
Standard diameter (mm)	200 300 400mm
Rotating speed(rpm)	20-140rpm
Height	1500-7000mm
Inclined degree	0 - 45°
Output	0.40-70m ³ /h



EnMa CP

22 30 40 55 75 110 150 185 220 300 370 Series

Pneumatic Conveyor

General in applications:

EnMa CP series pneumatic conveyor is used to transport bulk and crushed materials, which is reliable, low using cost, high efficiency, such as: plastic particles, powder, chemical, etc.
 The pneumatic conveying system supplies the compressed air to the conveying system by a blower, which will travel to the lower pressure side (the positive pressure system) to transport the solid material into the air stream through a rotary valve or a venturi device, where the solid particles are transported by the working air to the designated position.

Design features:

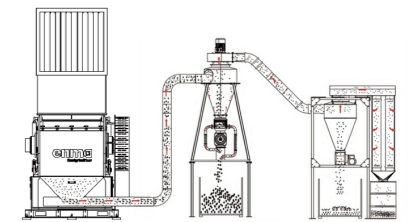
EnMa CP series has three different modes of the pneumatic conveying, including positive pressure suction, positive pressure blowing and negative pressure transporting.
 Positive pressure suction is used in the field of post-consumption crushing and recycling. Deliver the crushed material into the cyclone system through the fan leaves, and then the dust can be separated through the cyclone system.
 Positive pressure blowing is used for crushing and recycling of the scraps at factory, and the crushed material does not need to be transported through the fan leaves, that does not pollute the materials.
 Negative pressure transporting is used for online crushing recycling and powder transportation, that through a reasonable calculation on air pressure to install rotary valve, to your factory area more quiet and with no dust.



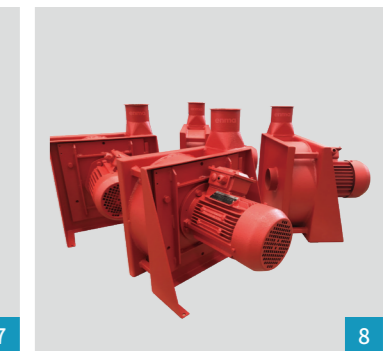
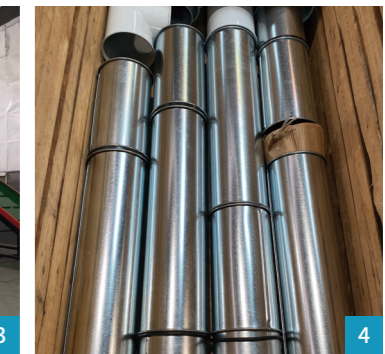
EnMa CP-A
Positive pressure suction device
 The crushed material can be absorbed into the cyclone through the fan blower, and the dust can be separated through the work of the cyclone. If the dust removal effect is not achieved, the dust collector of ENMA brand can be increased to further dust removing.



EnMa CP-B
Positive pressure blowing device
 The crushed material will be blown to the designated position through the fan blower. The materials with more strict requirements will not pass through the fan impellers, which avoids the pollution and impact of the materials.



EnMa CP-C
Negative pressure transporting device
 Through the powerful fan blower installed on the cyclone system, the crushed material will be sucked into the cyclone device, and the negative pressure generated can be used for dust removing, and the material will not be pass through the fan impellers, which avoids the pollution and impact of the materials.



1.Positive pressure blowing device
 5.Quick pipe connector

2.Negative pressure suction device
 6.Cyclone 400/600mm

3.Positive pressure suction device
 7.Dust collector

4.Standard pipe
 8.High efficiency blower fan