



**BestgrindTech**



**BestgrindTech**

**Granulator**



[www.enma.fr](http://www.enma.fr)

**Granulator**





CEO of ENMA FRANCE: Vincent Dome

Constantly create high quality products,  
continuous innovation, conserve natural habitats.

Insist on to creative high quality products by the  
cohesion from ENMA individual. As a leader to  
protect the environment around us.



## Welcome to the world of BestgrindTech!

### From Present to Future

Since Foundation in France, ENMA has been focused on exploring materials for 20 years, including wood, plastics, paper, biology, household waste, business waste, industrial waste, And other special areas of crushing and recycling technologies. We work to develop sustainable environmental technologies to maximize recycling and reproduction of these materials or wastes. We define our products as shredding, granulating, transporting, screening, Any ENMA customer can find a satisfactory recycling solution from a single machine or complex system produced by ENMA or from the entire plant recycling system. With the development of the company and the expansion of the market, European companies have been unable to meet the needs of production. In 2008, ENMA of France moved factory to Shanghai, China, and set up ENMA Granulator(China) Co., Ltd. And in China to continue to create sustainable development of environmental technology this dream. ENMA has kept its "BestgrindTech" promise, which means we will do our best to be more reliable than any other supplier. This applies to all ENMA products and services, and for our customers it means choosing ENMA products is the best decision they can make.

Provide you  
plastic granulating technology with  
quality of France.





### ◇ Granulating solution for Injection Molding Application

ENMA Granulator meets the challenge of plastic injection application by online recycling plastic waste. From waste to direct delivery of crushed material back to injection machine, ENMA's modular design and professional customization fully meet your online recycling.

ENMA 180 series and 200 series can perfectly match the recycling of up to 250 tons of plastic injection machine waste.

ENMA granulator special configuration including manipulator feed, belt conveyor and screw feed can meet customer needs.



### ◇ Granulating solution of blow Molding Application

ENMA provides an ideal choice for waste recycling for blow molding applications. From the end of a variety of small and medium containers, it is expected that the waste products of large containers and special automotive plastic fuel tanks can be solved very well. All models can be used in central causing and also can be used by the side of the machine as well.

Open type box and rotor design GS300/400/500 series are equipped with ENMA unique V shape and double scissors type super shear crushing chamber, which can effectively grab and avoid the problem of heavy container bouncing and not crushing on the rotary tool holder.

These ENMA models can be selected for a variety of feeding and discharging methods.



### ◇ Crushing solution for Extrusion Application

ENMA provides multi-purpose and special-purpose granulator options for waste recycling of extruded pipes and profiles.

On the basis of GH series, ENMA specially designed the way of feed and the design of multi-group knife rotor, which can effectively solve the crushing solid wall pipe of PP, PE20-315MM diameter. The small diameter pipe and profile can be fed manually. Large diameter pipes can be forced to feed automatically through hydraulic feeding pusher.

ENMA of pipe and profile recycling application modular design of GP500/700 series is the best choice of extrusion products field.



### ◇ Crushing Solution of Film and Sheet Application

ENMA GF400/600 series double open box with 70% screen area design can effectively solve the problem of film crushing. There are two kinds of commonly used treatment methods for film and sheet plastic waste. The coiled film / sheet is fed through an automatic traction roller feeding system installed at the feed inlet of the granulator for loosen and continuous feed granulator. ENMA patented double scissors cutting room with 3 and 5 blade rotor and cutting blade design to ensure that even the thinnest film can be easily crushed.



## GL200 Series Slow Speed Granulator

### Advantage of the GL Slow Speed Granulator

- Direct driven staggered rotor
- Special knife design makes adjustment unnecessary
- Easy access for maintenance and cleaning
- Slow rotor speed creates less noise and dust
- Easily customizable to suit different applications

### General Description

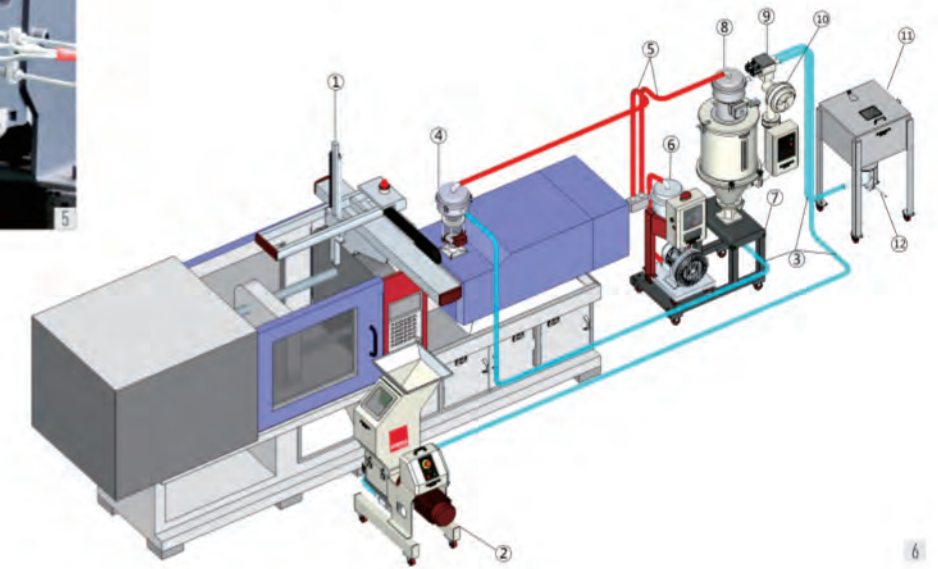
The slow speed granulator in the GL200 range feature a staggered 200mm diameter rotor with widths ranging from 200 to 450 mm. The rotor is directly driven by a geared motor. The low rotor speed reduces the noise level of the machine and creates less dust while grinding. The special design knives of the GL series can be sharpened easily and do not need adjustment afterwards. The material is fed via a sound proof feed hopper that can be tailored to fit various applications and feeding ways. Depending on the requirements, the machine can be fit with a wide variety of hoppers, they are mounted on either low or high level base frames with matching suction bins or bag filling adapters. Quick snap fasteners and hand screws make access to the machine for cleaning and maintenance fast and easy.

### Application

The GL200 slow speed granulators of the 200 series are mainly used in injection and blow molding processes as beside the press machines to grind runners and sprues. The resulting granules are then immediately reintroduced into the production process. The machines can be used for rejected products in the online recycling process as well. Different hopper and base frame designs make it possible to integrate the machine with most types of injection molding machines and robots.



- ◆ Fig 1 / V type staged array
- ◆ Fig 2 / Blade can be repeatedly sharpened
- ◆ Fig 3 / Assembling type screen design
- ◆ Fig 4 / Main picture
- ◆ Fig 5 / Screen to be discharged in fast way
- ◆ Fig 6 / Online recycling



	GL200/200	GL200/300	GL200/400
Machine weight in kg approx	180	200	230
Machine Measure in mm approx	820x480x1225	1110x510x1260	1255x510x1335
Capacity approx	20-30	30-50	50-100
Feed opening in mm approx	250x210	250x310	250x370
Dimension of cutting chamber	270X200	270X300	270X360
Standard motor in kW	3	3	4
Number of rotor knives	18	27	33
Number of stator knives	2	2	2
Standard screen in mm	5	5	5
Rotor diameter in mm	200	200	200
Rpm of the rotor	150	150	150



## GC300 Series Compact Granulator

### Advantage of the GC Compact Granulator

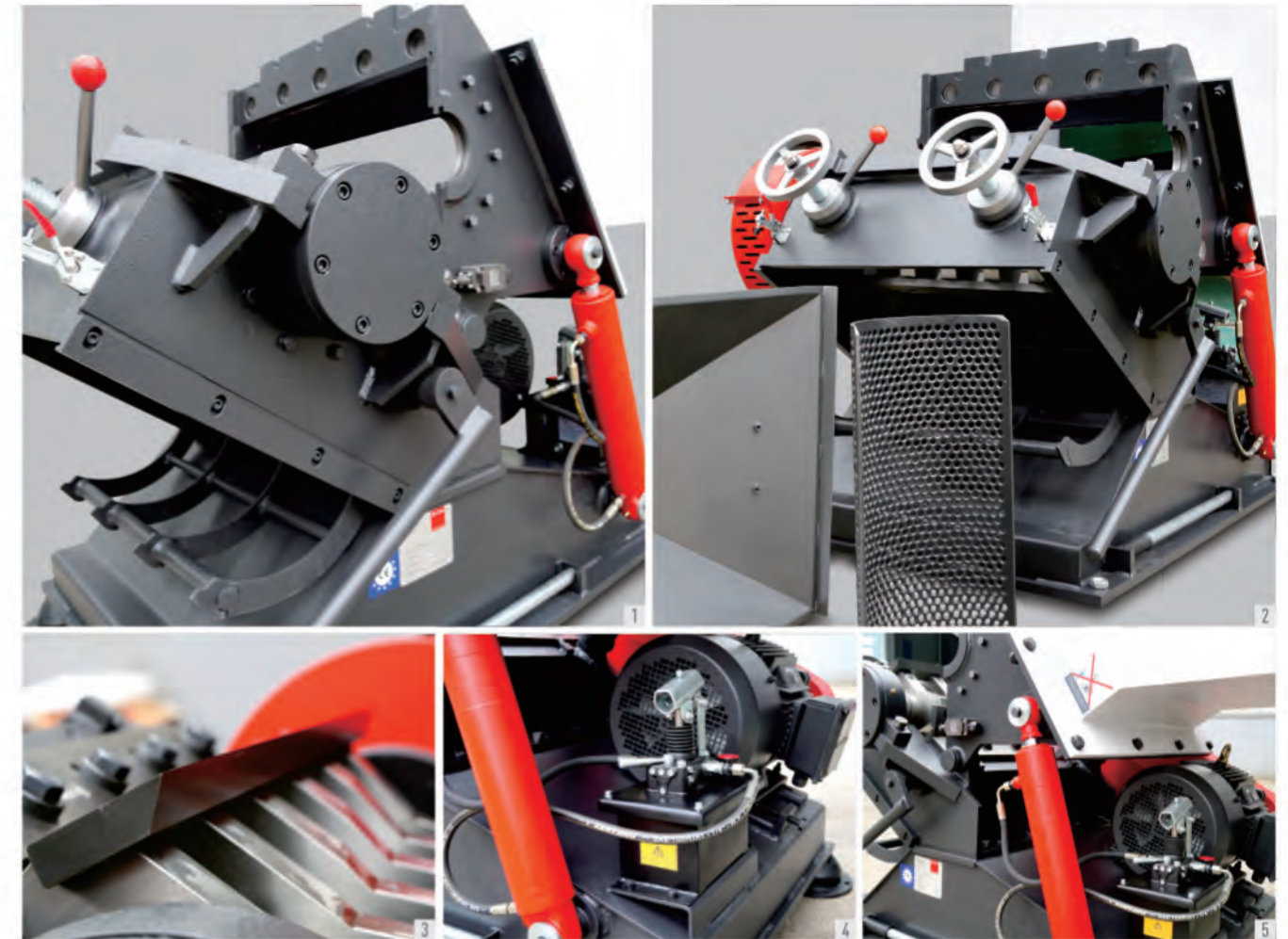
- Knives are adjusted outside of machine
- Compact design
- Different rotor types available
- Soundproof housing

### General Description

The GS compact sound proof granulator is designed with a complete sound proof enclosure resulting in an extremely quiet operation. Different rotor designs are available in width ranging from 300 mm to 1400 mm with a diameter of 300 mm. The completely welded cutting chamber in conjunction with the "V" type rotor design ensures dependability in operation and universal application use. While it delivers excellent sound proofing capabilities, it still offers easy and quick access to the cutting chamber during rotor and stator knife changes, servicing or screen exchanging. The sound dampening material used in these machines is based on the latest technological research.

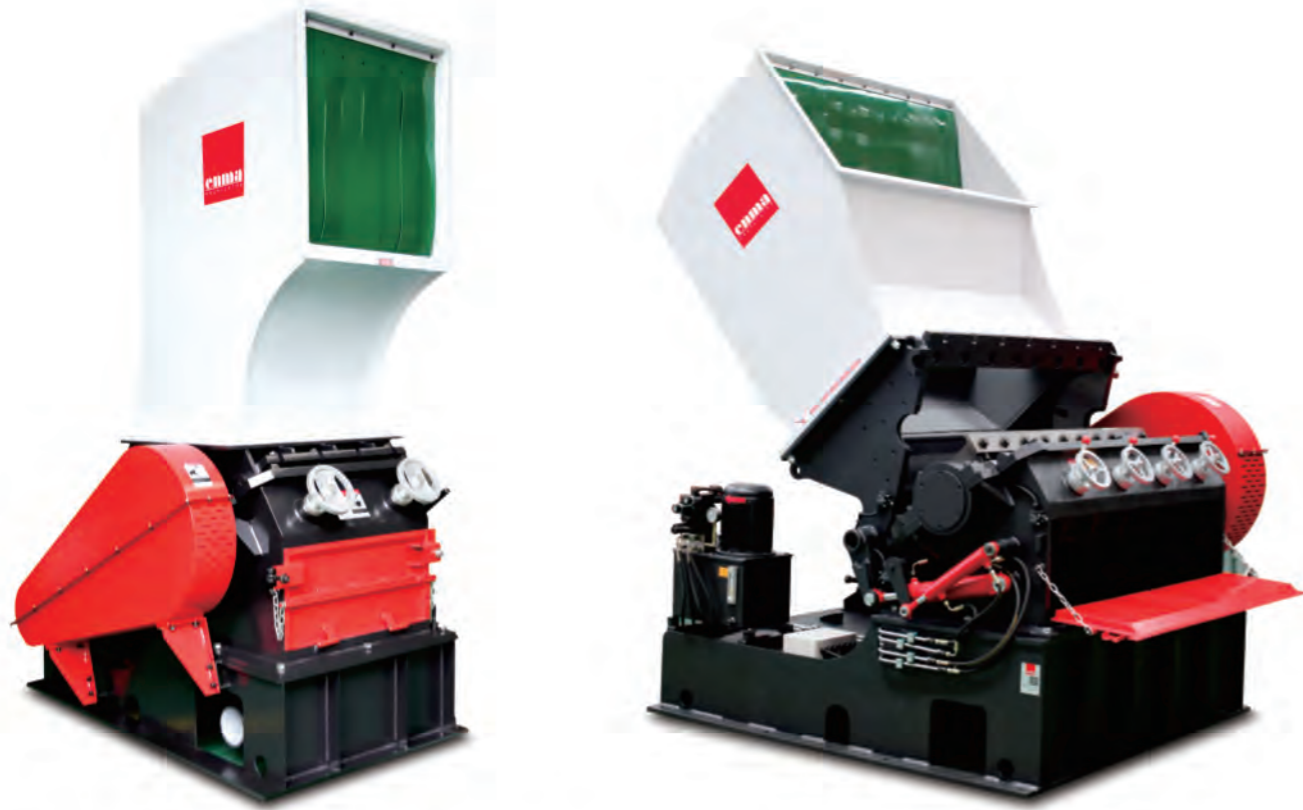
### Application

The cutting geometry of the GC series allows even voluminous materials to be ground. ENMA GC series line achieves a high quality regrind independent of the material type or form such as injection moulding parts, blow moulding parts, profiles, sheets, film, etc. The GC series granulator is mainly used in online operations for processing of rejected products, or runners and sprues. The small footprint and easy movability make the granulator very easy to place in existing operations.



- ◆ Fig 1 / Compact type design
- ◆ Fig 2 / Device of parts quick discharging
- ◆ Fig 3 / High performance cutting system
- ◆ Fig 4 / Manual hydraulic opening system
- ◆ Fig 5 / Hydraulic opening device

	GC300/300	GC 300/600	GC300/1000	GC 300/1400
Machine weight in kg approx	1150	1280	1500	2600
Machine Measure in mm approx	1500x800x1580	1500x1100x1580	1600x1400x1800	1600x1800x1800
Feed opening in mm approx	400x300	400x600	400x1000	400x1400
Standard motor in kW	7.5	11	18.5	22
Number of rotor knives	3x1	3x2	3x2	3x4
Rotor type	Standard	Standard	Standard	Standard
Number of stator knives	2	2	2	2
Standard screen in mm	8	8	8	8
Rotor diameter in mm	300	300	300	300



## GE 500 Series of Economy Granulator

### Advantage of GE Economy Granulator

- SPRUE GATINGS
- ON-LINE WASTE
- SMALL LUMPS
- WASTE PAPER
- PIPES
- FILMS
- URBAN WASTE

### General Description

GE series economy granulator adopts high efficiency double-scissors cutting technology of rotor. GE500 series has various of rotor type available, width ranging from 500 to 2000mm with diameter of 500mm. The whole welded steel structure and the V-shaped rotor design. It is suitable for the recycling of many kinds of materials, running smoothly and reliably. GE500 series granulator is equipped with manual or hydraulic box opening system, which easy to open and clean, to maintain the crushing chamber, so as to adjust and fix the blades, clean and replace screen. The series is with the latest developed soundproof material hopper, reliable technology and sound insulation effect.

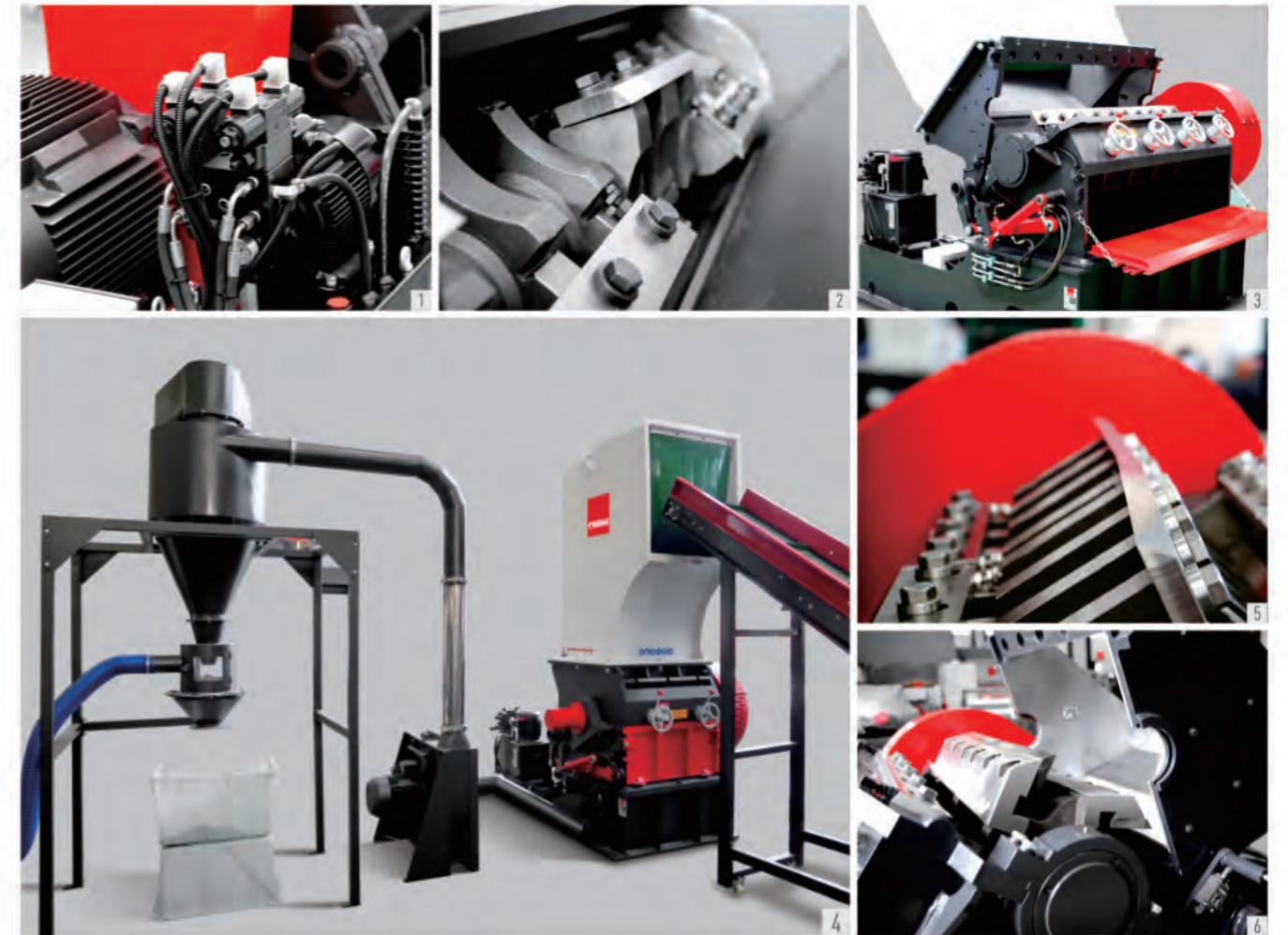
### Application

- GE Series of Economy Granulator

GE series is used economically for handling the defects during injection molding, sprues, pipes, profiles, sheets, films and nozzles. It is everlasting and easy to clean with longer life. A series of auxiliaries, such as blower, exhauster, conveyor, metal detector and metal separator are available upon requests.

- V type cutting technology

ENMA's reliable V-shaped cutting technology not only retains all the advantages of the original cross-cutting technology, but also has new characteristics. Cutting point only at the place where the blades cross instead of the whole blade. It considerably ensures lower noise, less powder and prolongs the service life, thus saving the energy. "V"-cutting technology drives the materials towards the centre of the rotor and solves the problems such as stacking materials inside, heat from rubbing and excessive side-wall friction. Standard GE series includes conveyor, exhauster group.



- ◆ Fig.1 / Electrical type of hydraulic opening system
- ◆ Fig.2 / Multi-knife cutting type
- ◆ Fig.3 / Machine design of open type
- ◆ Fig.4 / Conveyor+Granulator+Suction system
- ◆ Fig.5 / S-Universal type rotor
- ◆ Fig.6 / H-Heavy duty rotor

	GE500/500	GE500/700	GE 500/1000	GE500/1400
Machine weight in kg approx	2500	3500	4200	6000
Machine Measure in mm approx	1900x1700x2600	2000x1580x2800	2230x1860x2860	2400x2000x2900
Capacity approx	300-500	500-700	600-800	800-1000
Feed opening in mm approx	500x500	500x700	500x1000	560x1400
Standard motor in kW	30	37	55	75
Number of rotor knives	3x2	3/5x2	5x2	5x4
Number of stator knives	2	2	2	4
Jig for preadjustment of knives	included	included	included	included
Standard screen in mm	10	10	10	10
Rotor diameter in mm	500	500	500	500



## GH 700 Series Heavy Duty Granulator

### Advantage of the GH Heavy Duty Granulator

- Convenient and quick external knife adjusting design
- Special designed deflector for machine wide application
- Multiple rotor designs
- Proven machine housing design
- Everlasting and firm of welded steel construction

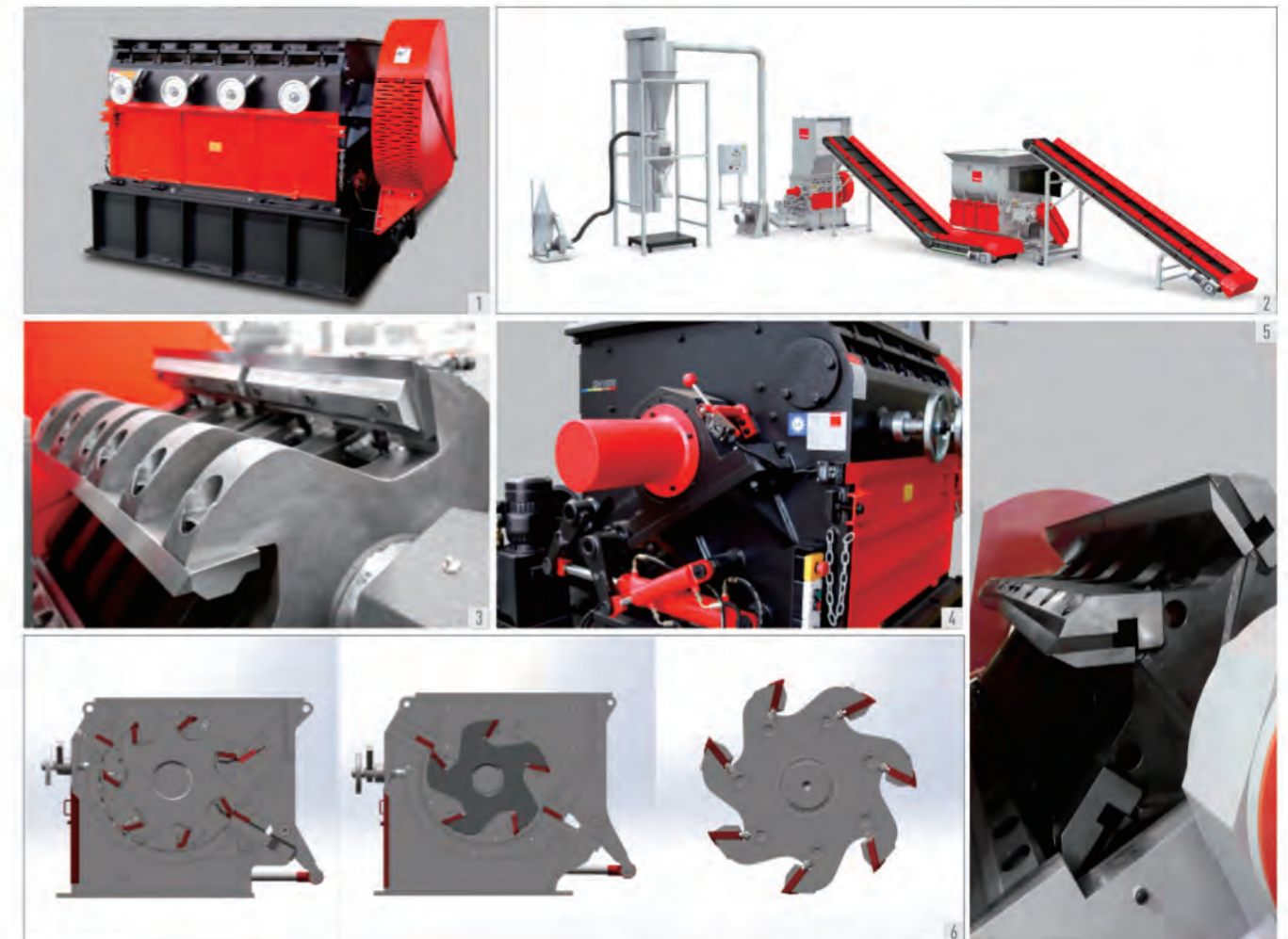
### General Description

The GH series heavy duty granulator offers a wide array of different rotor designs with width ranging from 700 mm to 2000 mm with a diameter of 700mm. The completely welded heavy steel construction is designed to withstand the most demanding and universal applications. Oversized rotor bearings, knife mounts and rotor shaft are equipped. The standard V-cut creates a high quality regrind with a very low percentage of fines in the output material. The removable third stator blade is acting as a deflector wedge and allows the machine to be quickly adjusted to different application scenarios. Other standard features include easily replaceable wear plates in the cutting chamber as well as outboard bearings reducing the risk of contamination.

### Applications

The wide range of rotors and hopper styles allow the GH series granulator to be tailored to almost every application in the plastic recycling field. The GH series granulator is mainly used as large central granulator for in-house recycling applications to process large thick walled parts in one step or as a second step granulator, after a shredder, to reach higher throughput rates. When used to crush light materials, such as bottles, the throughput can be greatly increased with the addition of ENMA force feeding device. For abrasive, contaminated or highly filled materials, the granulator can be equipped with special wear protections, such as hard facing of the rotor, housing and key parts manufactured from highly wear resistant steels.

ENMA GH series is specially designed for size-reducing all kinds of big-sized plastics, lumps and aluminum foil in the shape of film, sheet, pipe, tubular construction and various of hollow container. Conveyor belt, blower fan, storage silo and dust collecting system are available for larger output.



- Fig.1 / Everlasting and firm of welded steel construction
- Fig.2 / Conveyor+Shredder+Granulator+Collection
- Fig.3 / Universal rotor
- Fig.4 / Add the third set of stator blades for the large solid material
- Fig.5 / Design of heavy-duty rotor
- Fig.6 / Suitable for crushing large loosen material

	GH 700/700	GH 700/1000	GH700/1200	GH800/1400	GH800/1600	GH800/2000
Machine weight in kg approx	4500	7100	8800	10600	12000	14000
Machine Measure in mm approx	2300x2100x2900	2800x2060x3420	2800x2300x3450	2900x2500x3500	2900x2800x3500	2900x2800x3500
Feed opening in mm approx	700x700	1000x1000	1000x1200	1200x1400	1200x1600	1200x2000
Standard motor in kW	55	75	90	110	132	132
Number of rotor knives	5x2	5/7x2	5/7x2	5/7x2	5/7x4	5/7x4
Number of stator knives	2+2	2+2	4+2	4+2	4+2	4+2
Jig for preadjustment of knives	included	included	included	included	included	included
Standard screen in mm	10	10	10	10	10	10
Rotor diameter in mm	700	700	700	800	800	800





## GP Series Pipe. Profile. Sheet Granulator

### Advantage of GP Granulator

- Convenient and quick of knives being adjusted outside of machine
- Well thought out housing design
- Strong welded steel construction
- Specially designed for pipe, profile
- Oversized outboard bearings
- Wide choice of rotors

### General Description

The Pipe and Profile Granulators of the GP series are available in rotor width of up to 1000mm and diameters ranging from 300, 500, 700, 800 to 1000mm. The completely welded heavy steel cutting chamber is angled and fitted with an extended hopper to allow easy feeding of parts. The standard V-cut creates a high quality regrind with a very low percentage of fines in the output material. Other standard features include anti-wear plate that is easily disassembled in the broken chamber, outboard bearings reducing the risk of contamination.

### Applications

GP series is specially designed for crushing PE, PP, PVC pipes with diameter from 16mm to 450mm, wider doors and sheets. Conveyor belt, blower fan, storage silo and dust collecting system are available for higher output.

Conventional granulators have substantial problems handling long pipes and profiles. To feed large and bulky parts in most cases cavities or platforms are needed. Therefore, ENMA develop the GP series granulator. Thanks to the almost horizontal feeding hopper, long pieces can be fed easily. While the machine is operating, there is no risk of blocking. In case of congestion no more material will be accepted by the machine until the grinding chamber is empty and the machine will accept material again, and work continuously.



- ◆ Fig.1 / Unparalleled Large-Caliber Pipe Granulator
- ◆ Fig.2 / Heavy duty rotor
- ◆ Fig.3 / Hydraulic opening device

- ◆ Fig.4 / Design for wide board
- ◆ Fig.5 / Design for pipe and profile

	GP500/500	GP700/700	GP800/800	GP1000/800
Machine weight in kg approx	4000	5000	6400	6400
Machine Measure in mm approx	2080x1600x1600	2200x1800x1800	2200x2000x2800	2800x2200x3400
Capacity approx	300-500	500-700	700-900	900-1200
Feed opening in mm approx	400x300	600x500	700x500	800x600
Standard motor in kW	30	45	75	75
Number of rotor knives	5x1	5x2	5x2	7x2
Number of stator knives	2x1	2x1	2x1	2x1
Jig for preadjustment of knives	included	included	included	included
Standard screen in mm	8 or 10	8 or 10	8 or 10	8 or 10
Rotor diameter in mm	500	700	800	1000



## GS 300/500 Series Sound proof Granulator

### Advantage of GS Sound proof Granulator

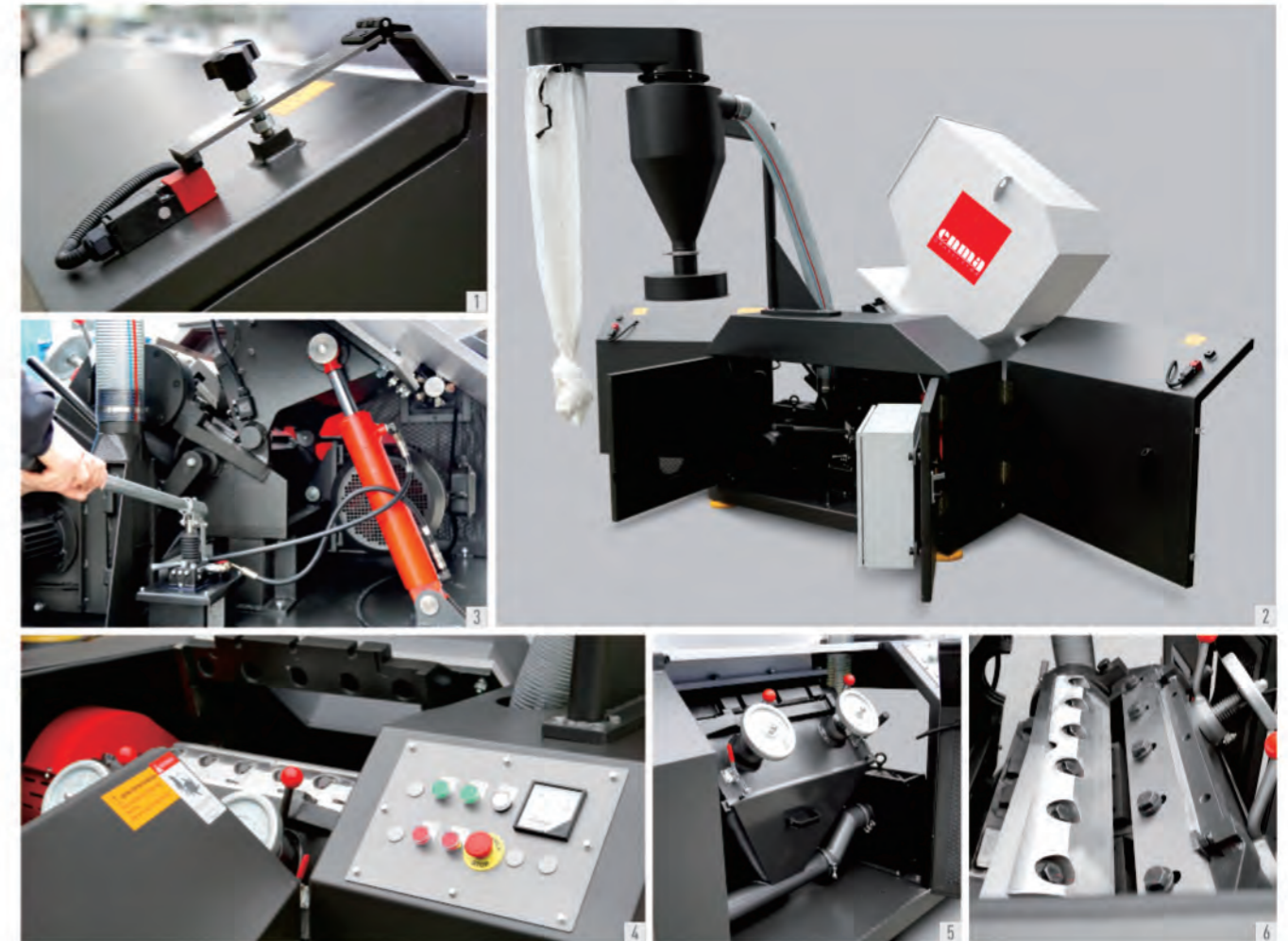
- Knives are adjusted outside of the machine
- Compact design
- Different rotor types available
- Soundproof housing
- Strong tangential feed hopper

### General Description

The GS sound proof granulator is designed with a complete sound proof enclosure resulting in an extremely quiet operation. Different rotor designs are available in width ranging from 300 mm to 1400 mm with a diameter of 300 mm. The completely welded cutting chamber in conjunction with the "V" type rotor design ensures dependability in operation and universal application use. While it delivers excellent sound proofing capabilities, it still offers easy and quick access to the cutting chamber during rotor and stator knife changes, servicing or screen changes. The sound dampening material used in these machines is based on the latest technological research.

### Application

The cutting geometry of GS series allows even voluminous materials to be ground. The complete GS series granulator achieves a high quality regrind independent of the material type or form such as injection moulding parts, blow moulding parts, profiles, sheets, film, etc. GS series machine is mainly used in online operations for processing of rejected products, pipes and sprues. The small footprint and easy movability make the machine very easy to place in existing operations.



- Fig. 1 / Security devices are the top concern of ENMA
- Fig. 2 / Compact type design
- Fig. 3 / Manual hydraulic opening device
- Fig. 4 / Design of integral type control cabinet
- Fig. 5 / Design of discharge without bridged
- Fig. 6 / Heavy duty rotor

	GS300/300	GS 300/600	GS300/1000	GS 300/1400
Feed opening in mm approx	400x300	400x600	400x1000	400x1400
Standard motor in kW	7.5	11	18.5	22
Number of rotor knives	3x1	3x2	3x2	3x4
Number of stator knives	2	2	2	2
Rotor diameter in mm	300	300	300	300

	GS500/500	GS 500/700	GS500/1000	GS 500/1400
Feed opening in mm approx	500x500	500x700	500x1000	560x1400
Standard motor in kW	30	37	55	75
Number of rotor knives	3x2	3/5x2	5x2	5x4
Number of stator knives	2	2	4	4
Rotor diameter in mm	500	500	500	500



## GB Series Granulator for Bottles

### Advantage of GB Bottle Granulator

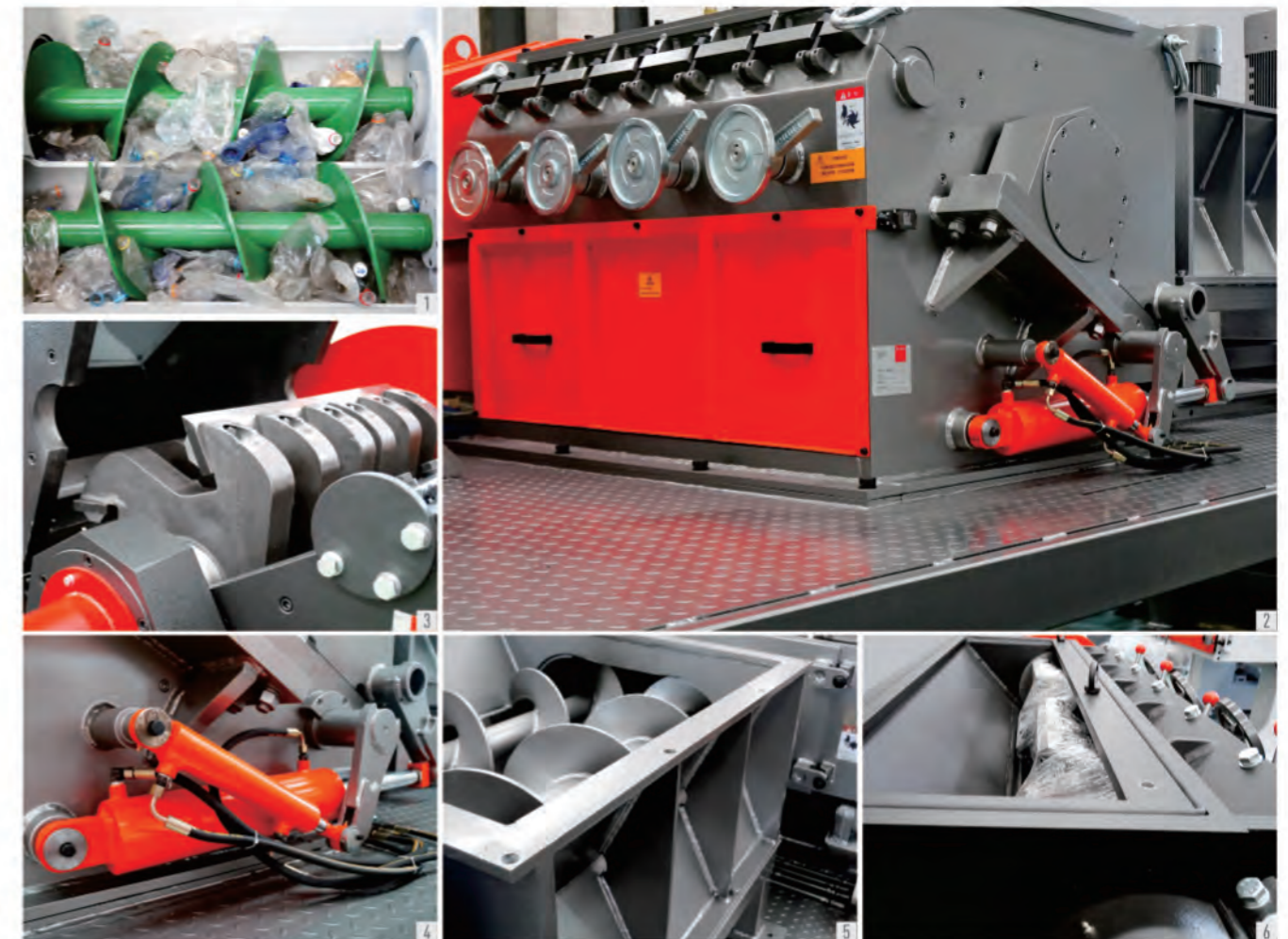
- Convenient and quick external knife adjusting design
- Multiple rotor designs
- Special designed deflector for machine wide application
- Proven machine housing design
- Everlasting and firm of welded steel construction

### General Description

GB PET series granulator is a special PET bottle granulator with high output and low energy consumption designed by ENMA. The output can reach 500KG-6000KG/H. The granulator offers a wide array of different rotor designs with width ranging from 700 mm to 2000 mm with a diameter of 700mm. The completely welded heavy steel construction is designed to withstand the most demanding and universal applications. Oversized rotor bearings, knife mounts and rotor shaft are equipped. The standard V-cut creates a high quality regrind with a very low percentage of fines in the output material. The removable third stator blade is acting as a deflector wedge and allows the machine to be quickly adjusted to different application scenarios. Other standard features include easily replaceable wear plates in the cutting chamber as well as outboard bearings reducing the risk of contamination.

### Applications

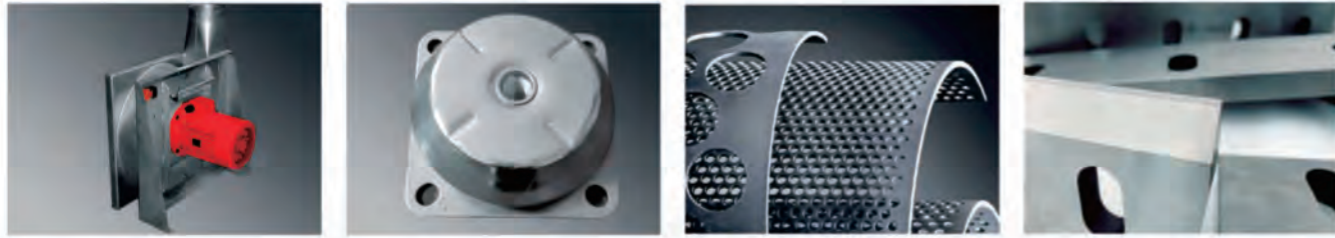
The wide range of rotors and hopper styles allow the GB series granulator to be tailored to recycling of normal PET bottle, PP/PE bottle. The GB series granulator is patented PET granulator of ENMA, which can be equipped with special wear protections, such as hard facing of the rotor, housing and key parts manufactured from highly wear resistant steels.



- ◆ Fig. 1 / Parallel screw force feeding
- ◆ Fig. 2 / Design of external bearing
- ◆ Fig. 3 / Rotor of dual-scissor cutting
- ◆ Fig. 4 / Hydraulic system of granulator chamber opening
- ◆ Fig. 5 / Screw feeding quantity upon output quantity
- ◆ Fig. 6 / Rubber sealing system of integral chamber, for crushing with water

	GB 700/700	GB700/1000	GB700/1200	GB700/1400
Machine weight in kg approx	4800	7900	8900	11600
Machine Measure in mm approx	2800x2100x2900	3200x2060x3420	3200x2300x3450	3500x2500x3500
Feed opening in mm approx	600x800	700x1000	700x1200	700x1400
Standard motor in kW	55	75	90	110
Force feeder	3	6	6	9
Number of rotor knives	5x2	5/7x2	5/7x2	5/7x2
Number of stator knives	3x1	3x1	3x2	3x2
Jig for preadjustment of knives	included	included	included	included
Standard screen in mm	10	10	10	10
Rotor diameter in mm	700	700	700	700

There is enough spares in stock at ENMA  
 With appropriate workers to deliver by air, by sea or by express, etc.  
 We suggest clients to have quantities of delicate spares in stock at factory,  
 Such as blade, screen and so on for exchanging in time  
 And guarantee the machine running normally.



## ENMA Product list



ENMA Granulator(China)Co.,Ltd  
 Add:No.121,5888#,Baoqian Road  
 Jiading District,Shanghai,China  
 Tel:+86-21-69932999  
 Fax:+86-21-59589222  
 www.enma.cn.com  
 www.enma.fr

**Not all products listed in this product manual are supplied to all countries and territories.**

This product manual may refer to parts that are not standard equipment but are purchased only as optional equipment. In order to see the parts of the machine more clearly, the protective housing part on the picture has been opened or removed, and the dimensions are retained, design and equipment modification rights. All the information in the manual is pure information and is not legally binding. Our quotation or order is an authoritative document.